



TMX | TSX Venture Exchange : BMV

OTC: BMVVF

**TSXV: BMV | OTC: BMVVF**

Corporate Presentation | May 2026

# Gold Exploration in British Columbia & Nunavut, Canada



# FORWARD-LOOKING STATEMENTS

---

Forward-looking statements contained in this presentation that are not historical facts constitute “forward-looking information” within the meaning of applicable Canadian securities legislation and the United States Private Securities Litigation Reform Act of 1995 (collectively, “Forward-Looking Information”). Forward-Looking Information includes, but is not limited to, statements regarding anticipated exploration and drilling programs, permitting, and potential future financial or operational performance.

Forward-Looking Information is based on a number of assumptions, including, but not limited to, the Company’s ability to execute its exploration plans, obtain necessary permits, access financing on reasonable terms, and general economic and market conditions. Forward-Looking Information is subject to a variety of risks and uncertainties, including risks related to exploration and development, commodity price fluctuations, regulatory approvals, environmental risks, and the availability of capital, among others.

Although the Company believes that the assumptions and expectations reflected in such Forward-Looking Information are reasonable, there can be no assurance that such statements will prove to be accurate, and actual results may differ materially from those anticipated. Readers are cautioned not to place undue reliance on Forward-Looking Information.

For a more complete discussion of risk factors, readers are referred to the Company’s public disclosure filings available on SEDAR+.

Except as required by applicable law, the Company undertakes no obligation to update or revise any Forward-Looking Information to reflect subsequent events or circumstances.

*Lorne M. Warner, P. Geo., is the Qualified Person as defined by National Instrument 43-101 and has reviewed and approved the technical information contained in this presentation.*



# STOCK INFO AND CAPITAL STRUCTURE



TSX-V: **BMV**  
OTC: **BMVF**

## PRICE & VOLUME



## CAPITAL STRUCTURE

As of May 13<sup>th</sup> 2026

Stock Price	0.115
Shares Issued & Outstanding	49,623,694
Cash	~250k
Insider Ownership	~13%
Warrants	12,543,334
<b>Shares Fully Diluted</b>	<b>65,117,028</b>



### 1- Gold Bridge Mining Camp ~ 4.2 Moz

Canada's highest-grade historic districts ~17.7 g/t Au  
**Talisker Resources** (TSK.V MC~300m) Bralorne Mine 1.7Moz @ 6.4g/t,  
**Endurance Gold** (EDG.V MC ~90m) Reliance Project- 1.45 Moz @ 2.3 g/t Au, inferred

### 2 - Agnico Eagle - Hope Bay Camp ~ 8.8 Moz\*

3.4 Moz at 6.53 g/t Au P&P  
2.2 Moz at 4.61 g/t Au indicated  
3.2 Moz at 5.98 g/t Au inferred

### 3 - B2 Gold - Goose & Back River District ~10.1 Moz\*

Goose Mine 300 koz/year @ 5.97 g/t  
2.4 Moz at 6.79 g/t Au P&P  
4.2 Moz at 7.45 g/t Au Indicated  
3.5 Moz at 8.05 g/t Au inferred

LISTED ON

TSXV: BMV | OTC: BMVF

\* From Agnico & B2 gold corporate website May 2026

## IN THE HEART OF MAJOR MINING CAMP



# KEY HIGHLIGHTS

## Peerless Project - BC - 56 km<sup>2</sup>

- High Grade Historical result on the project:
  - RC 87-8 : **4.52m at 29.93 g/t Au**,
  - RC 87-9 : **1.52m at 35.12 g/t Au**
- Bralorne–Pioneer system mined 4.2Moz Au at ~17.7 g/t
  - Talisker (TSK.V~300m) : Bralorne Mine - **1.7Moz @ 6.4g/t**, production E2026 69kt
  - Endurance Gold (EDG.V~100m) : Reliance - **1.45 Moz @ 2.3 g/t Au**, inferred

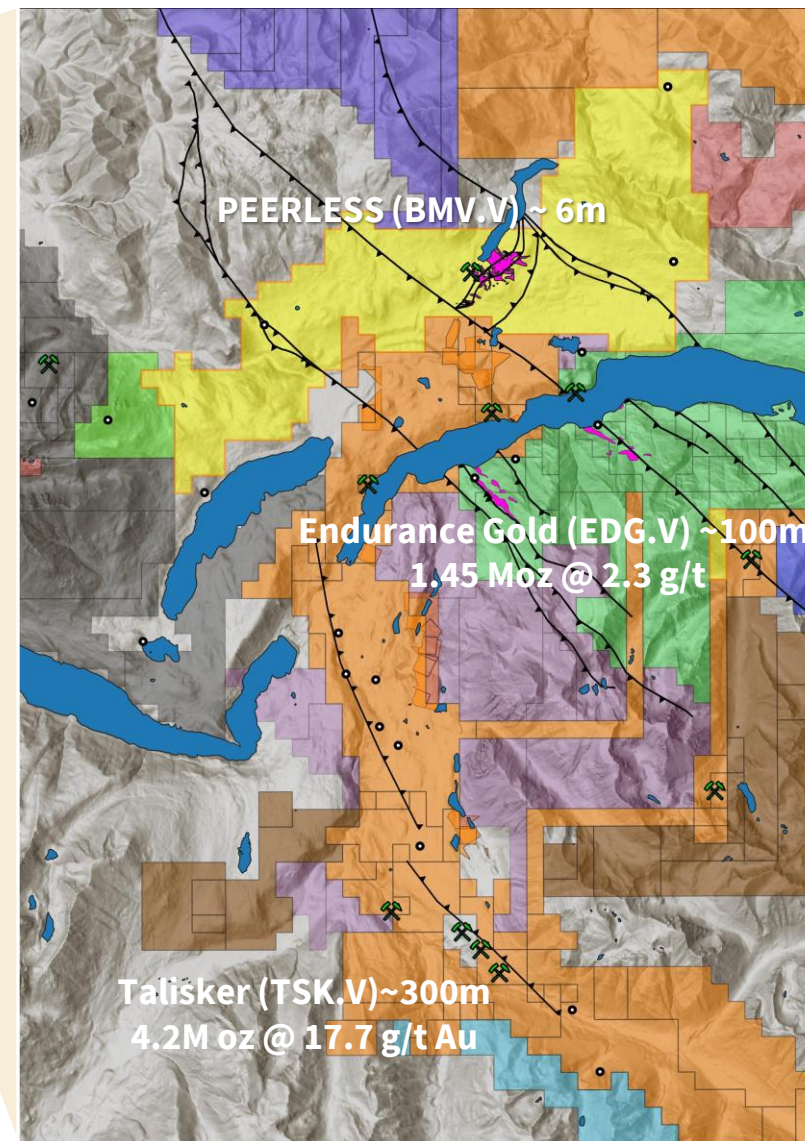
## Turner Lake - Nunavut - 125 km<sup>2</sup>

Located within the same prospective greenstone belt setting as

- Agnico Eagle Mines — Hope Bay ~ 8.8 Moz
- B2Gold District— Goose & Back River District ~10.1 Moz
- Under explored project with historical drilling returning :
  - TL-09-26: 18.00m @ 5.60 g/t Au**
  - TL-09-28: 2.00m @ 25.56g/t Au**
  - TL-09-29: 13.0m @ 13.21g/t Au**

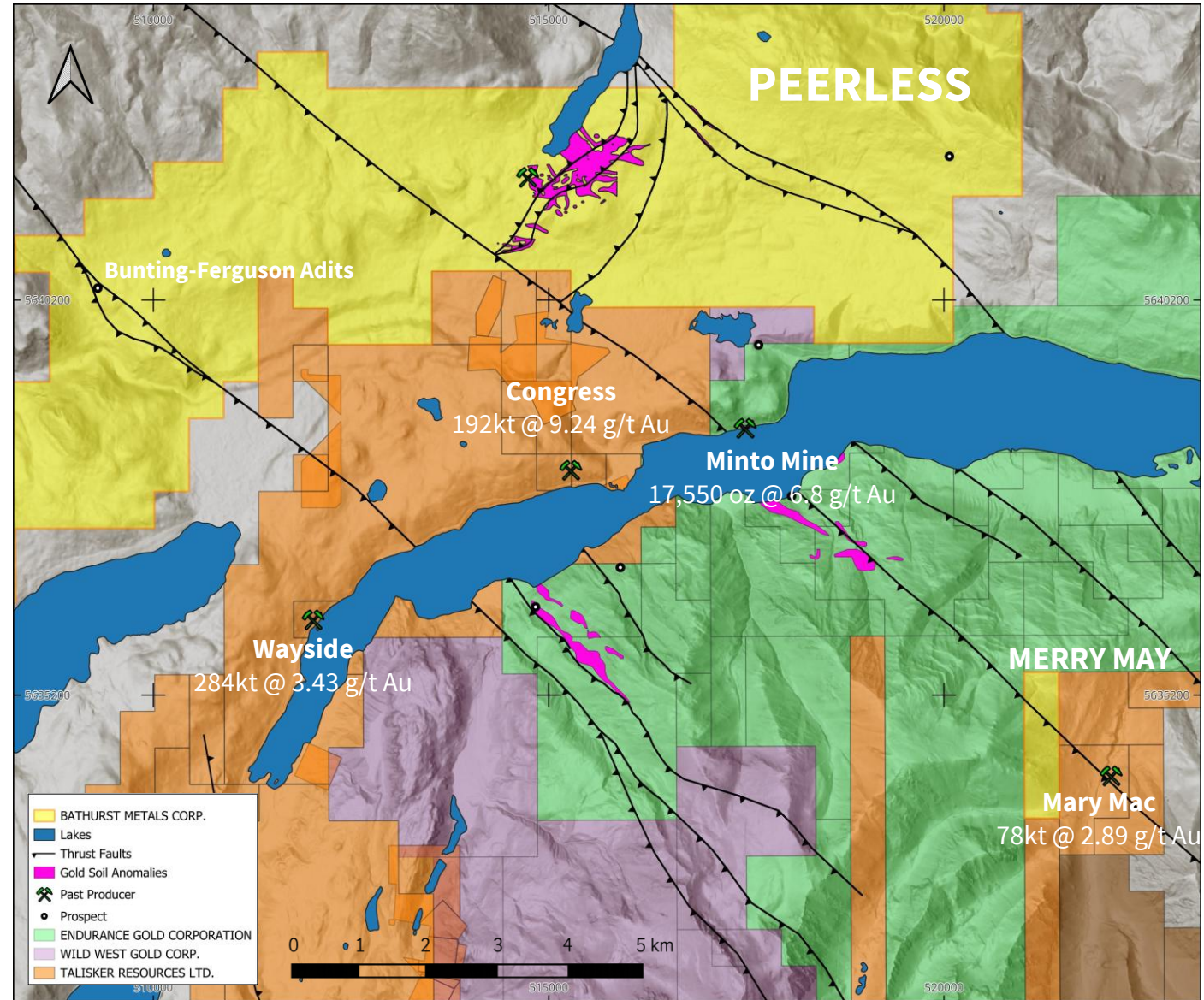
## Recent management change creates rerating opportunity

- New team, simple vision, proactive issuer focused on delivering value to shareholders



# PEERLESS PROJECT

- 14 mineral claims totaling 5,643 hectares
- Large scale (**Au, Ag, Pb, Zn**) anomalies covering **1,500m x 600m** where trust faults are crosscut by shear structures
  - Same geological setting as surrounding historical mine & deposit
  - Historical underground workings with known gold occurrences and **Multi-ounce** high grade **drill intercepts**
- Accessible year-round, with moderate topography and extensive logging road network



# PEERLESS PROJECT

Peerless represents an intermediate orogenic system bridging the Bralorne and Reliance styles — **a compelling and underexplored target.**

Deposit Model

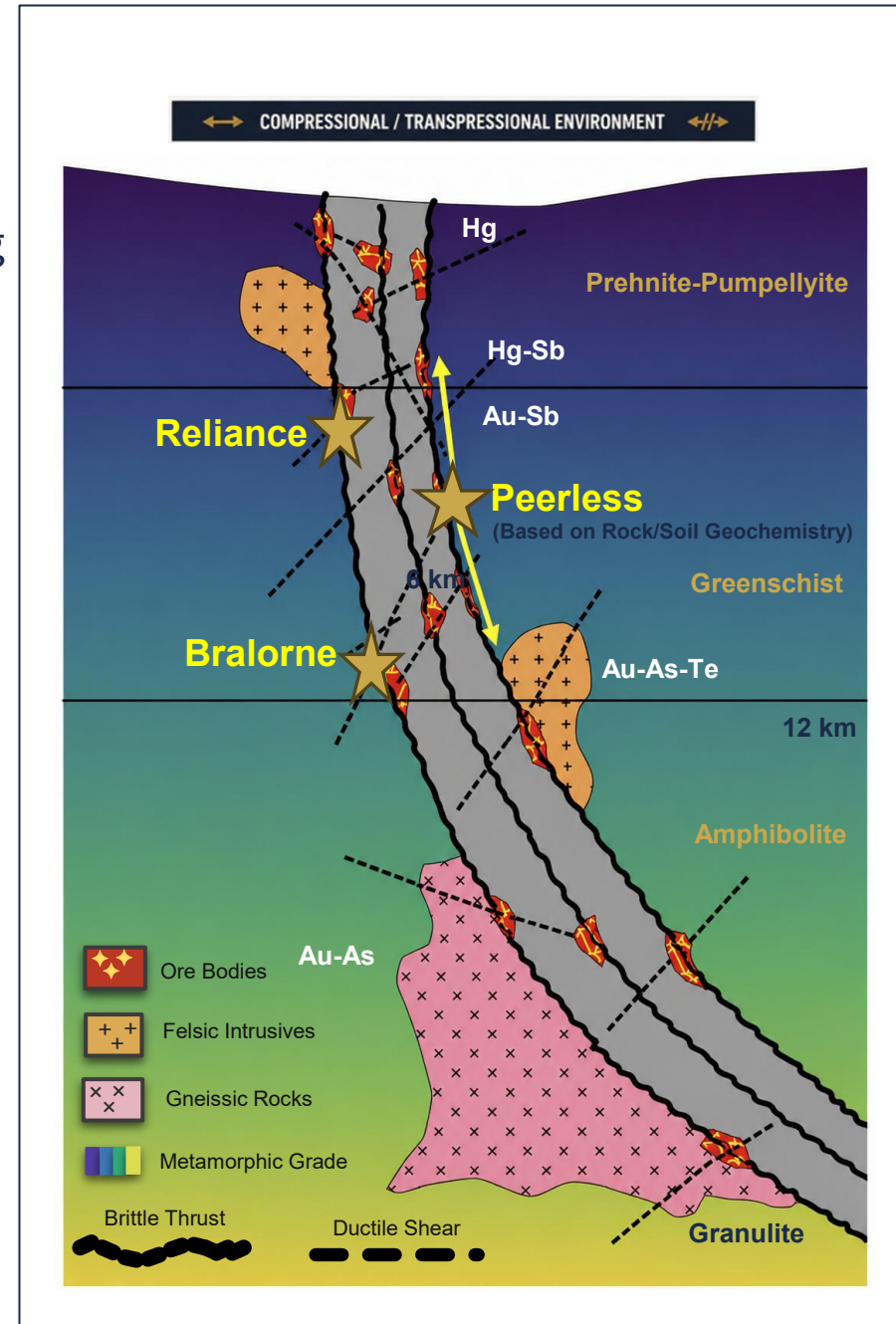
Mid- to upper-level orogenic gold system

Formation Condition

~0–400°C, upper crustal

Transitional Setting

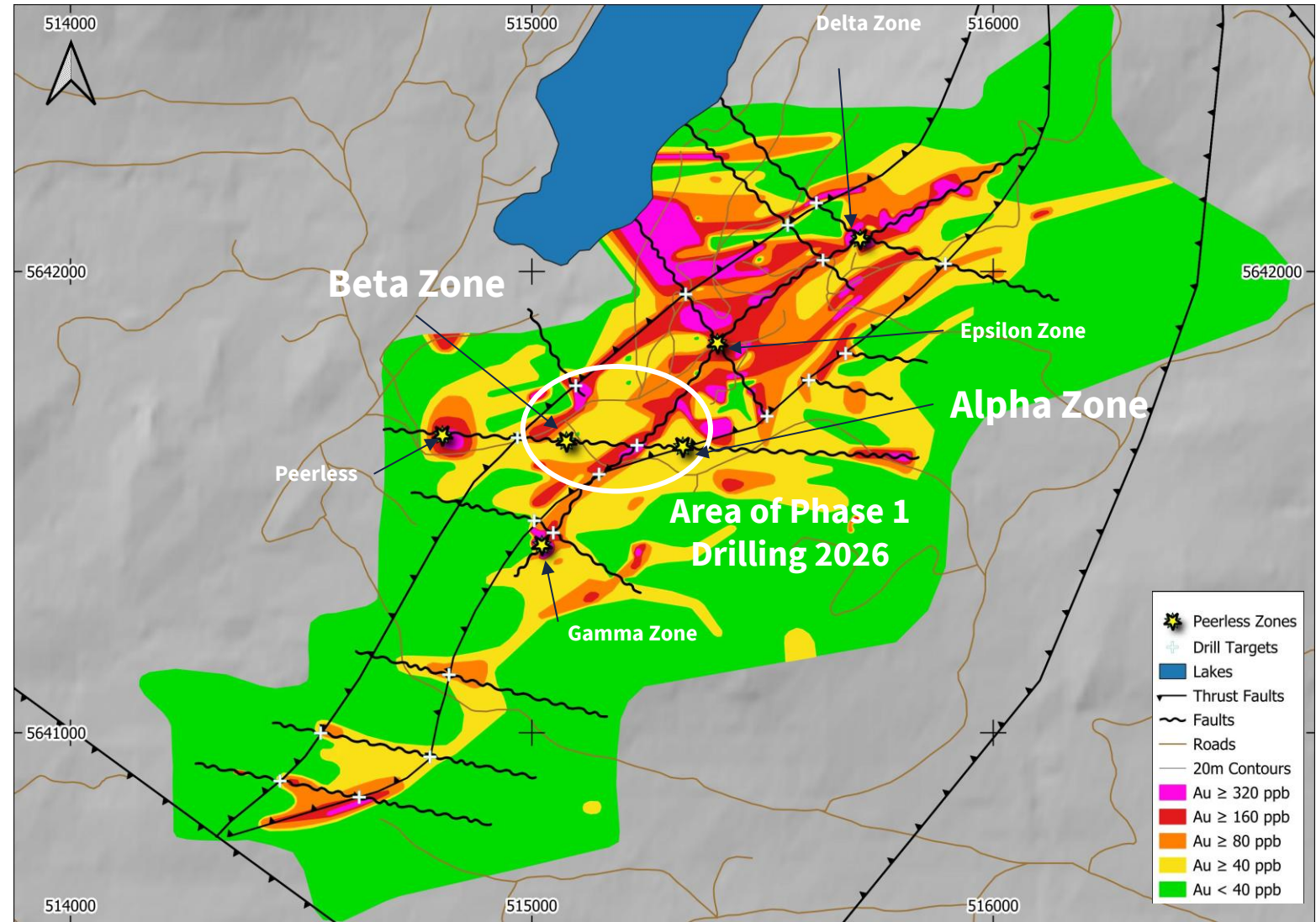
- Shallower than Bralorne
- Deeper than Reliance
- Geochemistry spans both systems (features of Bralorne & Reliance)



# PEERLESS PROJECT

- Five distinct gold zones identified (Peerless, Alpha, Beta, Gamma, Delta, Epsilon)
- Thrust faults and secondary faults cross the anomalous zone – classic structural setting for orogenic gold

Perless project	Sample Type	Interval	Grade
Area	(type)	(m)	(g/t Au)
Alpha	Channel Sample	2	13.7
Beta	RC 87-8	4.52	28.93
Beta	RC 87-9	1.52	35.12
Beta	RC 87-12	6.1	4.67
Beta	DDH PR24-004	5.1	6.3
Peerless	Underground Channel	2	13.7

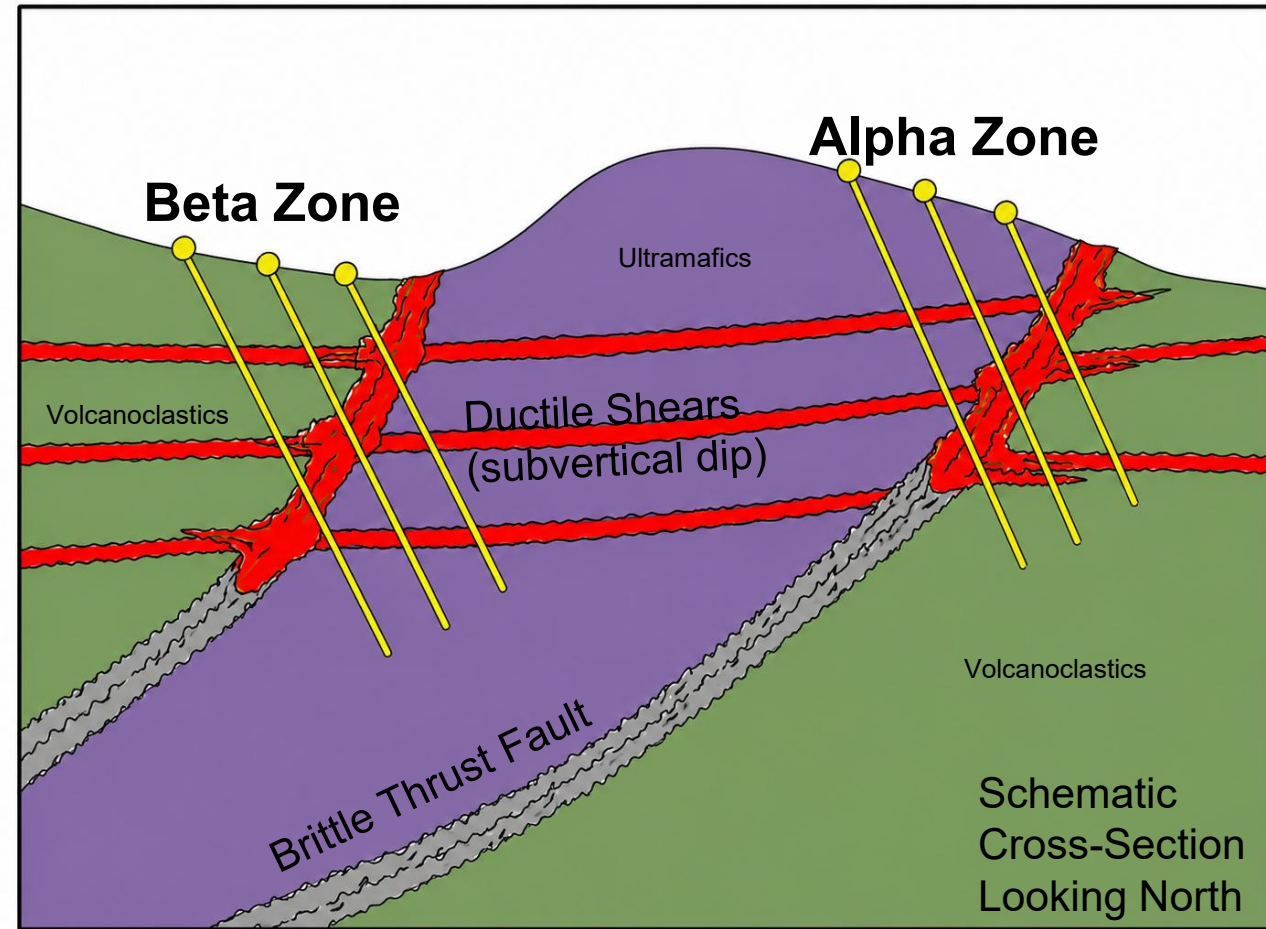
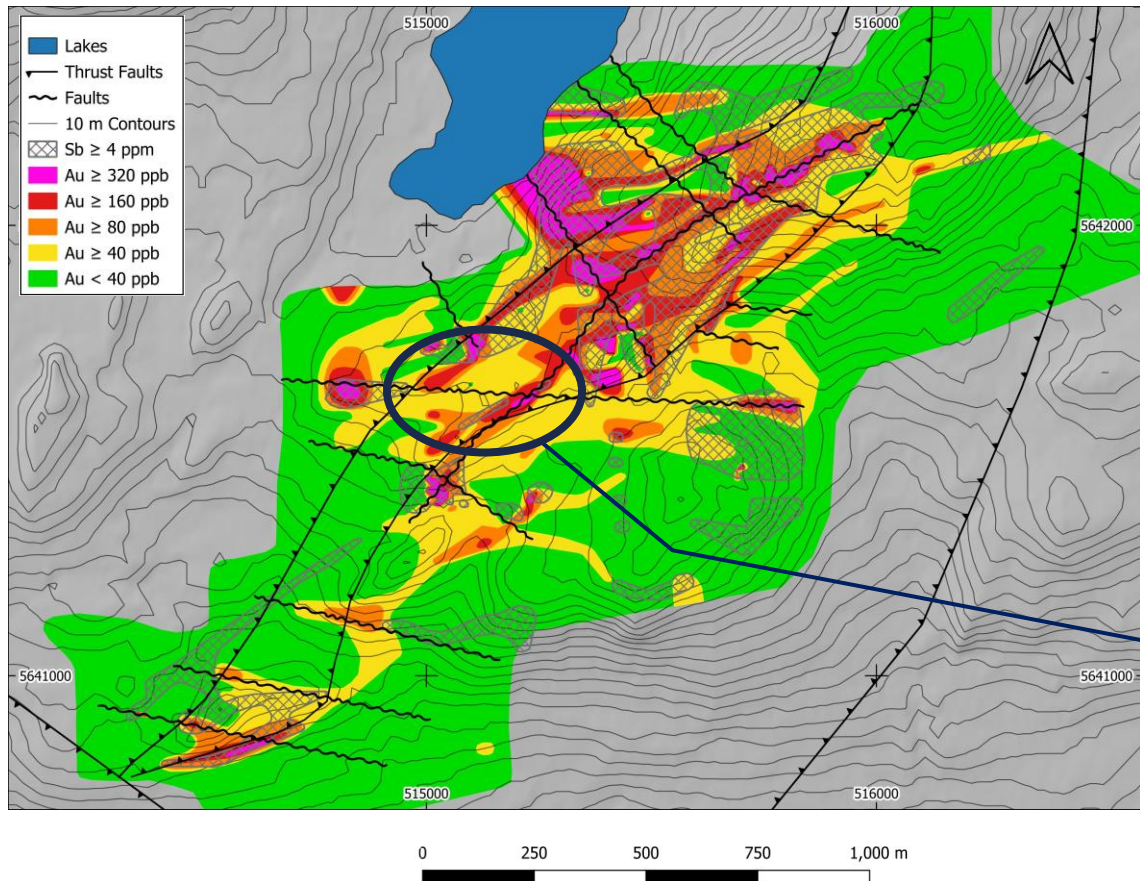


Note: All sample intervals from drilling are sample lengths and not true widths.



# PEERLESS PROJECT – Phase 1 drilling

- Target the crosscut of the East-West shear zone and the trust fault where the 2024 drilling program intercepted visible gold





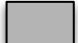








Gold Bearing Structures     Proposed 2026 Drill Holes

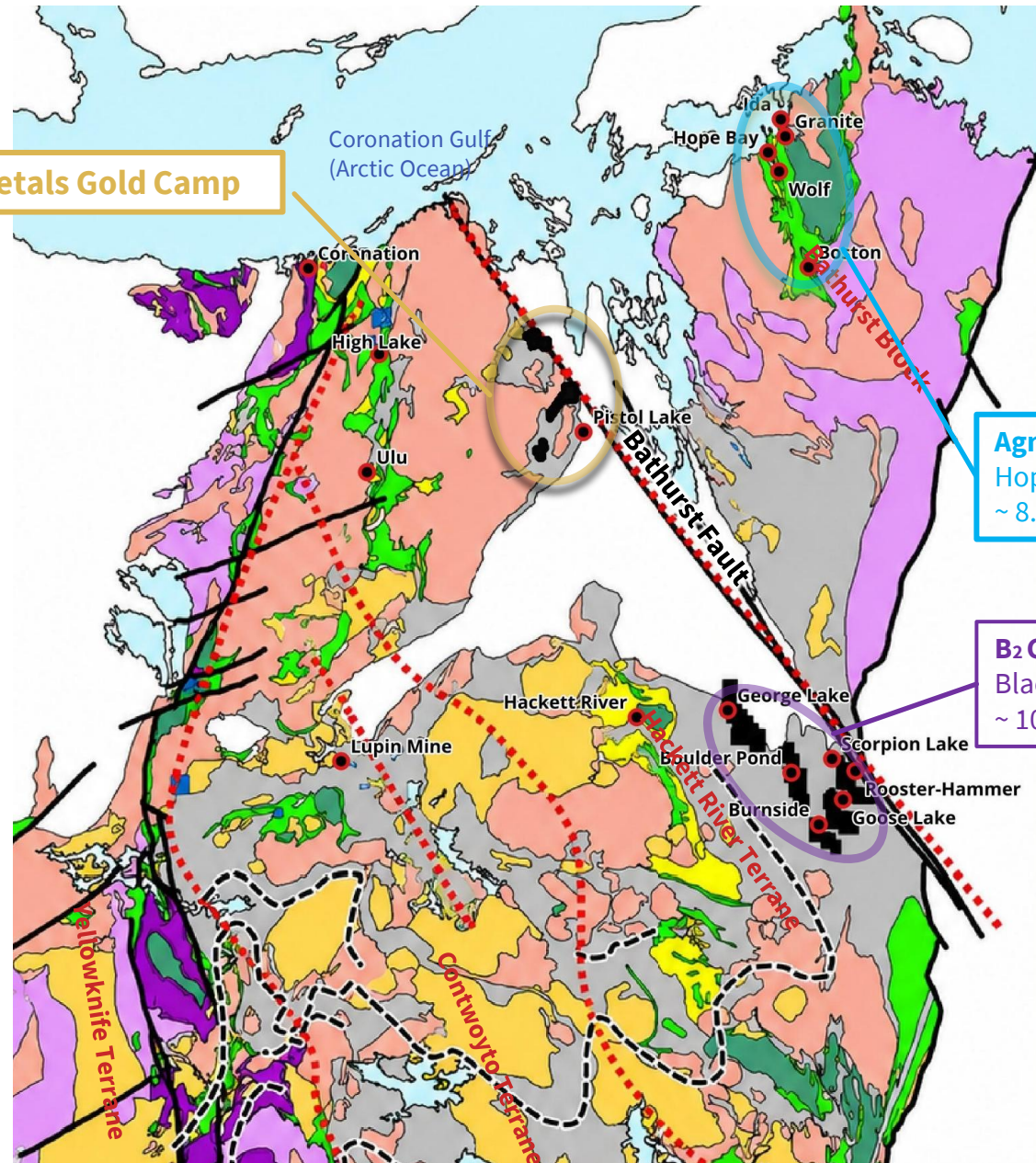
- Target to test the lateral & down dip extension of Alpha & Beta Zones

# Nunavut Region

## Archean Slave Craton

-  "Late" granitoids
-  Biotite +/- hornblende granitoids
-  Gneissic granitoids; migmatite
-  Synvolcanic (in part) intrusions
-  Metasedimentary rocks; turbidites
-  Felsic to intermediate volcanics
-  Mafic to intermediate volcanics
-  "Basement" gneissic complex
-  Major Proterozoic fault
-  Mineral Claims
-  Mineral Deposits

**Bathurst Metals Gold Camp**



**Agnico Eagle**  
Hope Bay Gold District  
~ 8.8 Moz Au

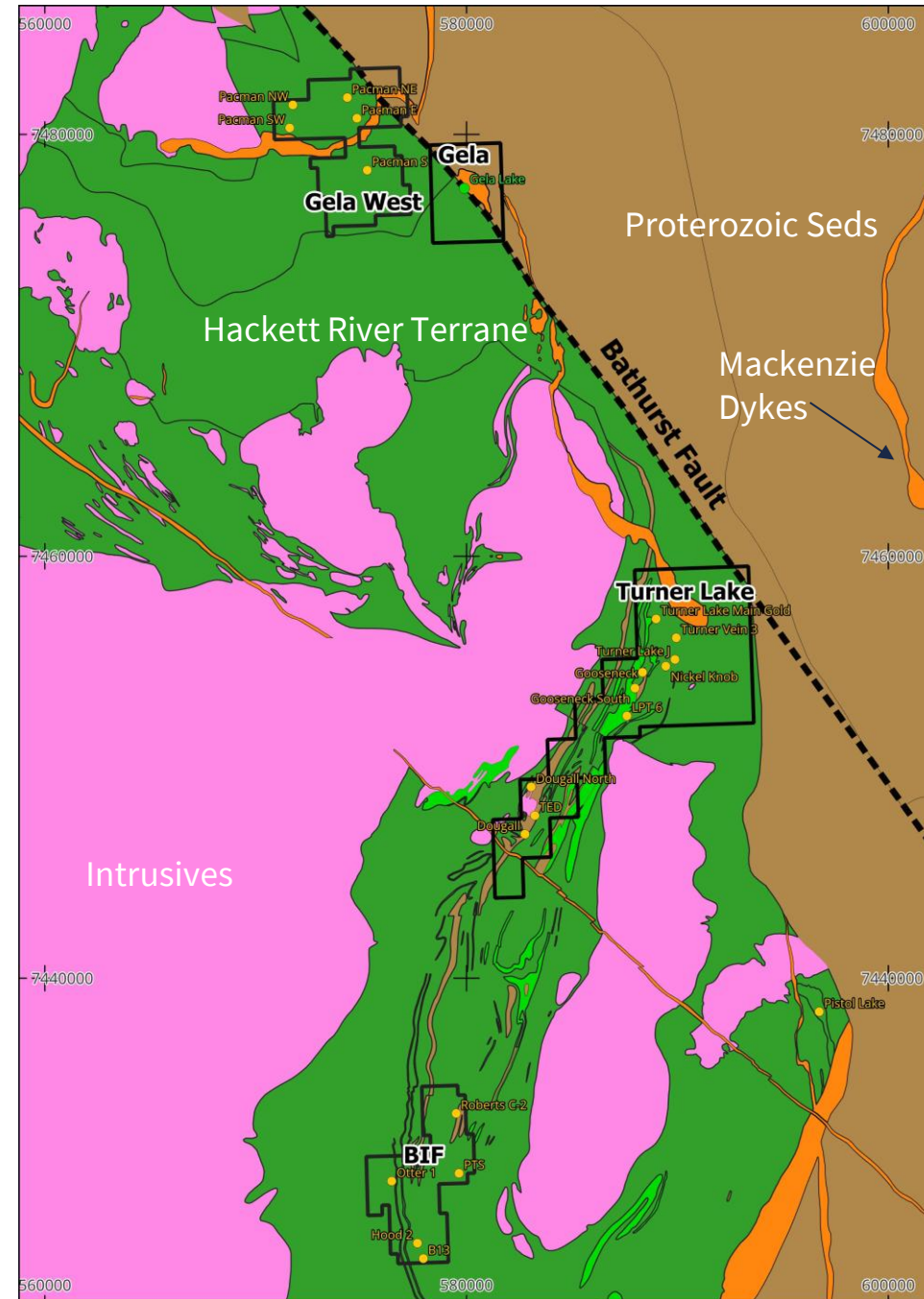
**B<sub>2</sub> Gold**  
Black River Gold District  
~ 10.1 Moz Au

100 km

# STRATEGIC LAND POSITION

- Bathurst metals controls 100% ownership of all significant gold occurrences in the Turner lake area
- Gela Lake: large-scale Cu–Ag–Au greenfields target with strong geophysical anomalies.
- Gela West & BIF: historical gold values up to **10.30 g/t Au** with limited modern exploration. District-scale land package with strong discovery upside in an underexplored region.
- Located within the same prospective greenstone belt setting as:
  - Agnico Eagle Mines — Hope Bay
  - District B2Gold — Back River District
- Region known to host **multi-million-ounce gold deposits**.

**District-scale gold and polymetallic opportunity with strong discovery potential.**



# TURNER LAKE PROJECT

## MINERAL OCCURENCES

### 1- TURNER LAKE MAIN GOLD ZONE

Archean Lode

Historical Drill Result:

- TL-09-26: 18.00m @ 5.60 g/t Au
- TL-09-28: 2.00m @ 25.56g/t Au
- TL-09-29: **13.0m @ 13.21g/t Au**

### 2- TED

Archean Iron Formation

Historic grab samples:

- 138.2 g/t Au
- 70.3 g/t Au
- 68.9 g/t Au
- 42.9 g/t Au
- 33.8 g/t Au.

### 3- NICKEL KNOB

Proterozoic Massive Sulphides

Historical Drill Result:

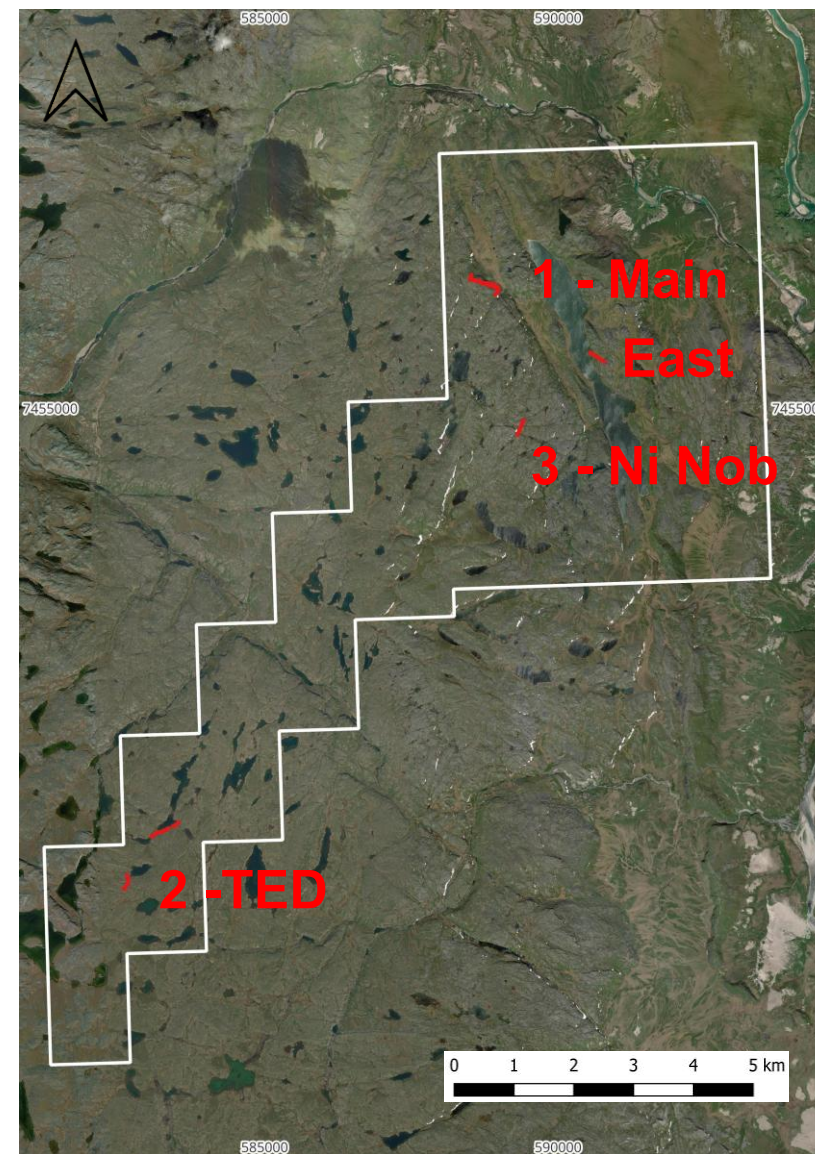
- TL-08-17: **14.0 m @ 1.87% Cu, 1.63% Ni, 15.75 g/t Ag**
- TL-08-18: 7.0 m @ 0.79% Cu, 0.94% Ni, 4.40 g/t Ag

### TURNER EAST

Archean Lode

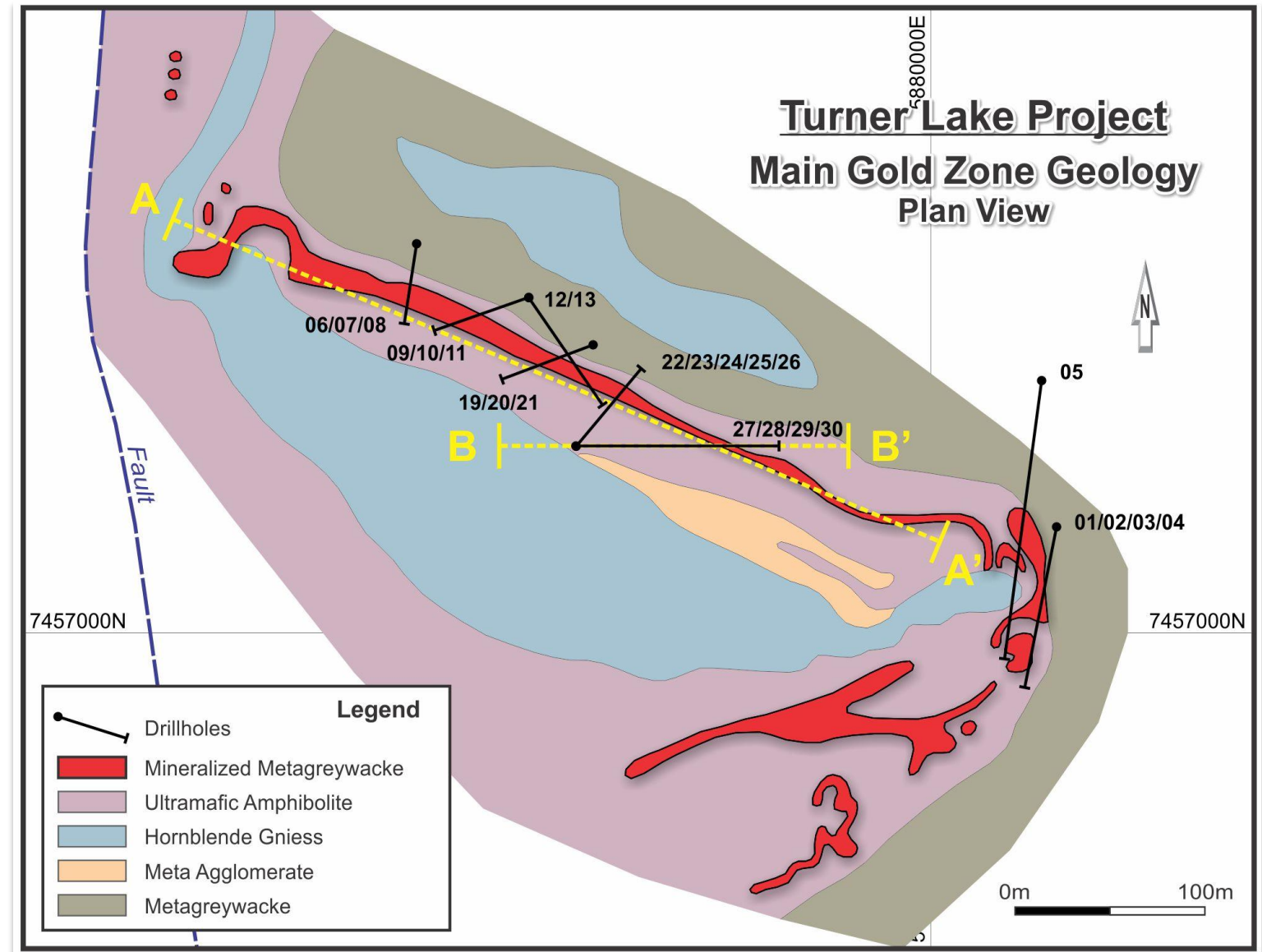
Gold and Silver target

MULTI-COMMODITY POTENTIAL  
EXPLORATION UPSIDE



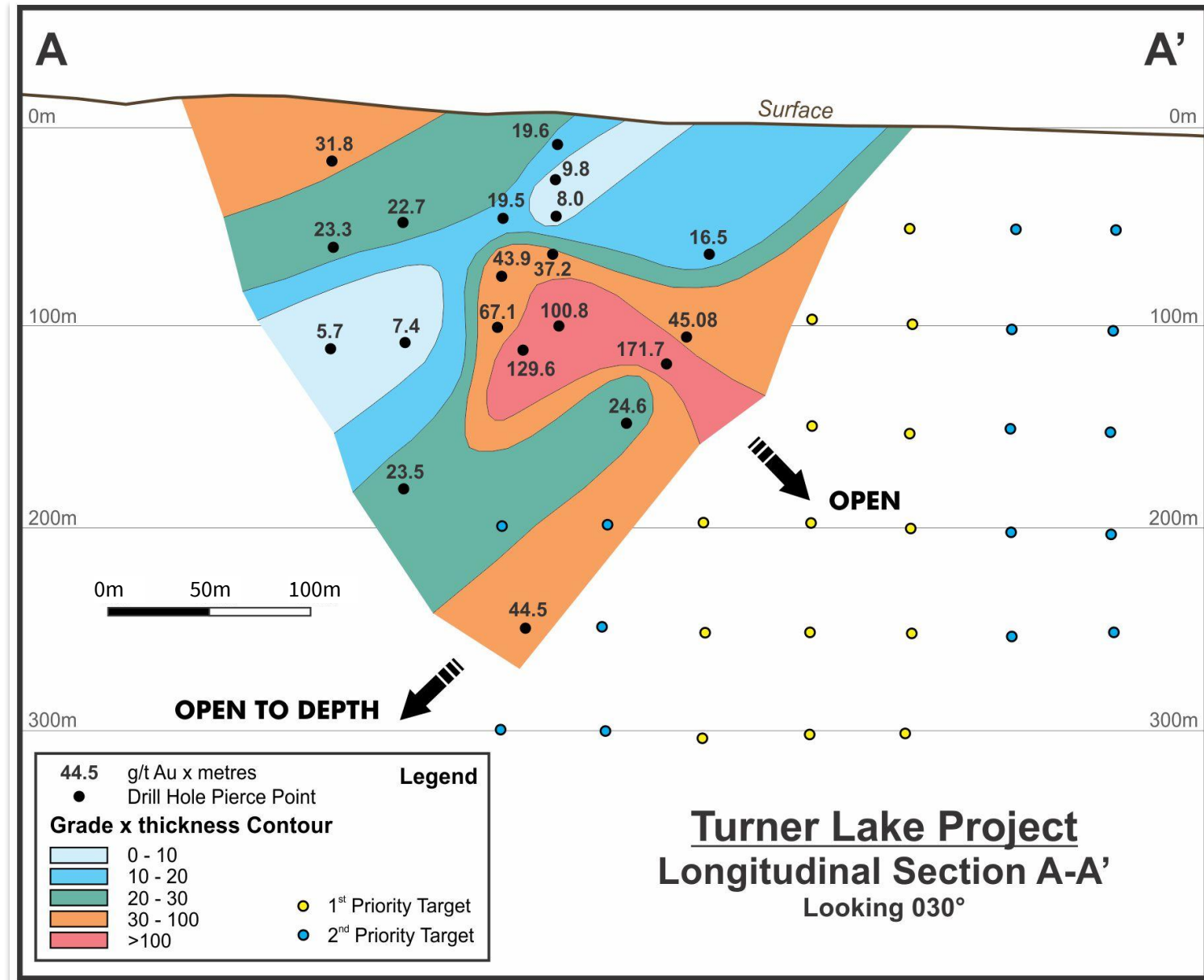
# 1- TURNER LAKE MAIN GOLD ZONE

- Discovered in the 1960's the Main Gold Zone has had 22 diamond drill holes that tested across the zone from both Chevron Minerals in 1986-1989 and Northrock Resources in 2008-2009.



# TURNER LAKE PROJECT

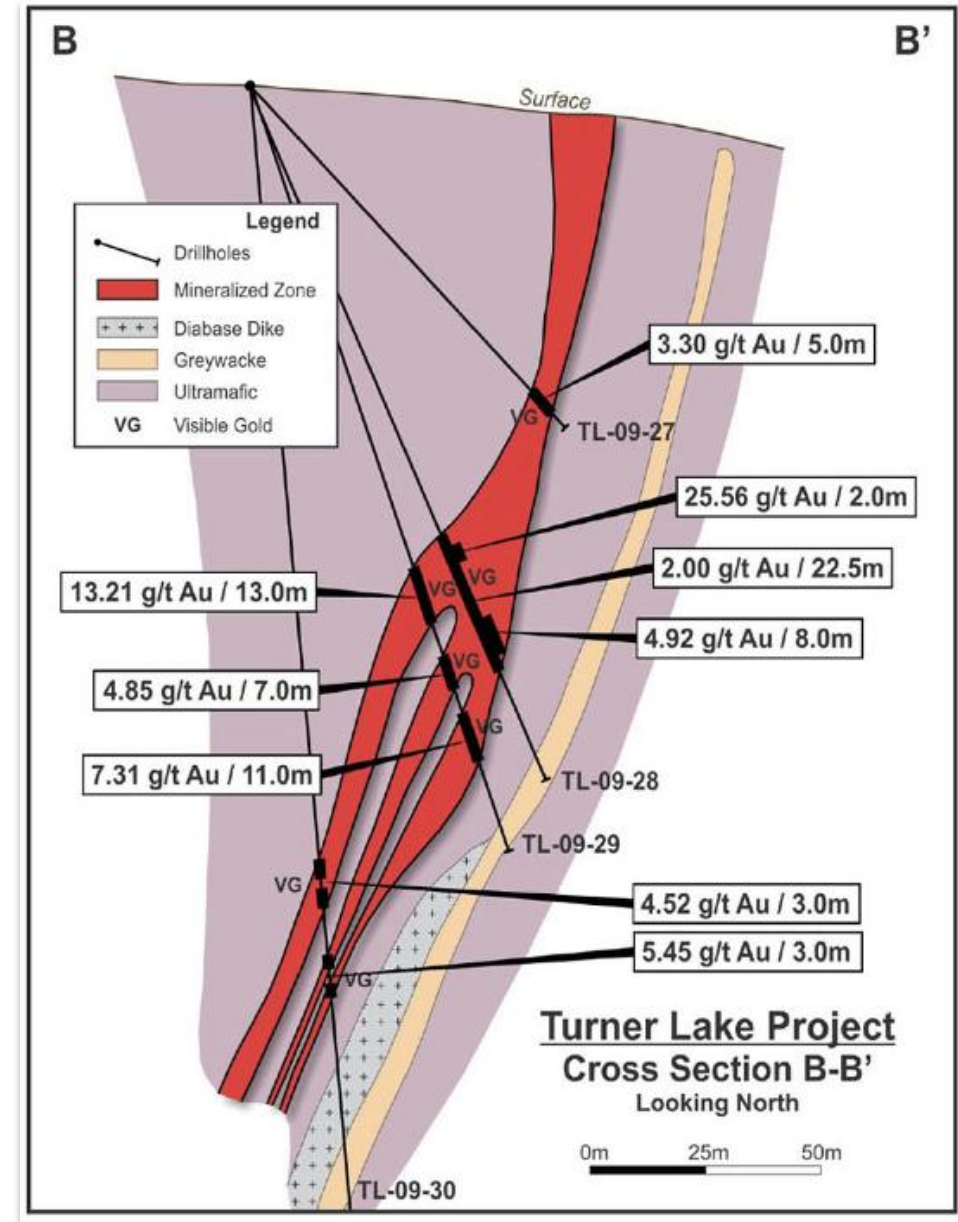
- Main Gold Zone is open in all directions
- Results are based solely on the Northrock drill data
- Thicknesses were calculated using estimated true widths rather than core lengths
- The longitudinal section suggests a moderate westward plunge of mineralization



# 1- TURNER LAKE PROJECT

Drill Hole Assay Results (All lengths presented are core lengths)

Drill Hole (ID)	From (m)	To (m)	Width (m)	Au (g/t)
TL-09-22	28.50	32.50	4.00	4.91
Including	31.50	32.50	1.00	9.80
TL-09-23	34.20	34.70	0.50	19.20
TL-09-24	40.70	44.10	3.40	2.35
Including	40.70	41.20	0.50	9.42
TL-09-25	50.00	61.20	11.20	3.32
Including	50.00	52.00	2.00	9.35
	60.00	61.20	1.20	10.10
TL-09-26	<b>93.00</b>	<b>111.00</b>	<b>18.00</b>	<b>5.60</b>
Including	93.00	95.00	2.00	12.50
Including	103.00	108.00	5.00	8.70
TL-09-27	88.60	93.60	5.00	3.30
Including	91.60	93.60	2.00	5.74
TL-09-28	101.0	102.0	1.00	6.36
	<b>111.0</b>	<b>113.0</b>	<b>2.00</b>	<b>25.56</b>
	124.0	132.0	8.00	4.92
Including	124.0	127.0	3.00	6.49
TL-09-29	<b>104.0</b>	<b>117.0</b>	<b>13.0</b>	<b>13.21</b>
Including	113.0	114.0	1.00	75.60
Including	116.0	117.0	1.00	31.80
	124.0	131.0	7.00	4.85
	136.0	147.0	11.00	7.31
Including	138.0	142.0	4.00	11.14
TL-09-30	168.0	171.0	3.00	4.52
	180.0	183.0	3.00	5.45

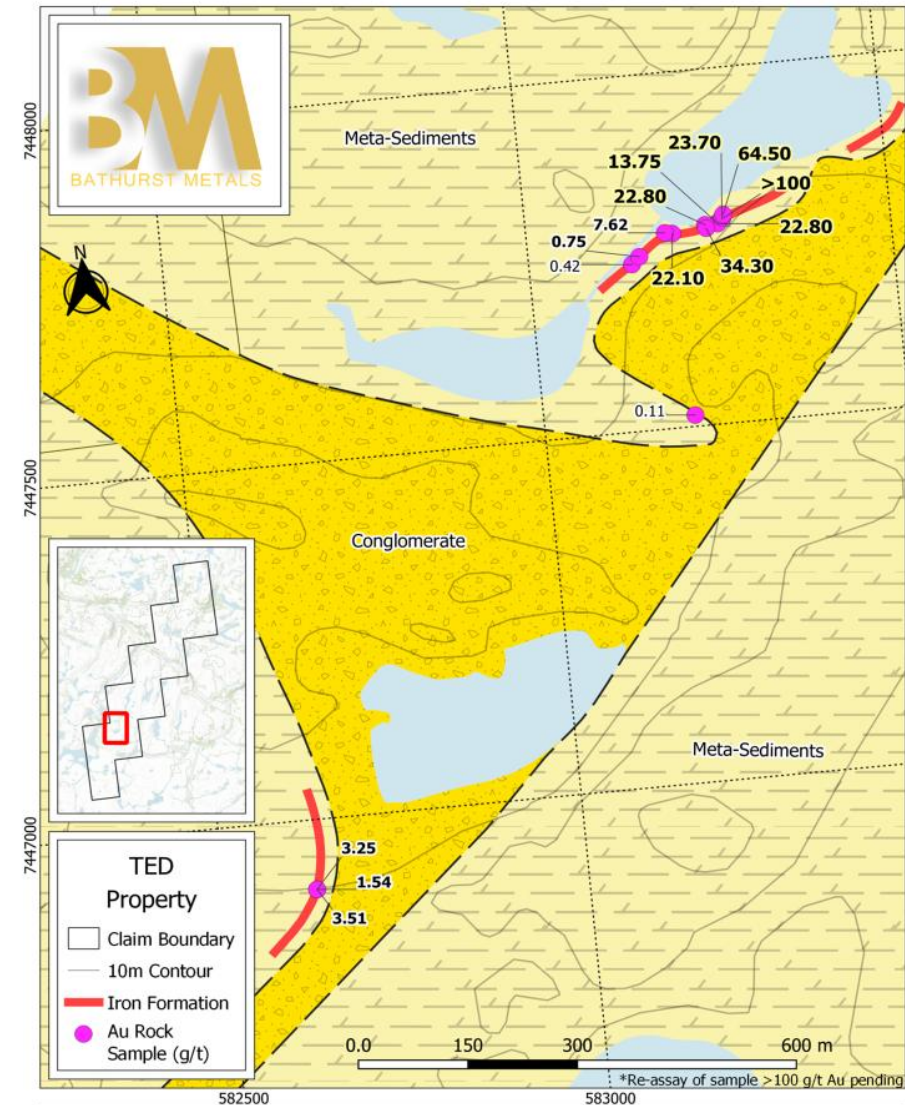


# 1- TURNER LAKE PROJECT



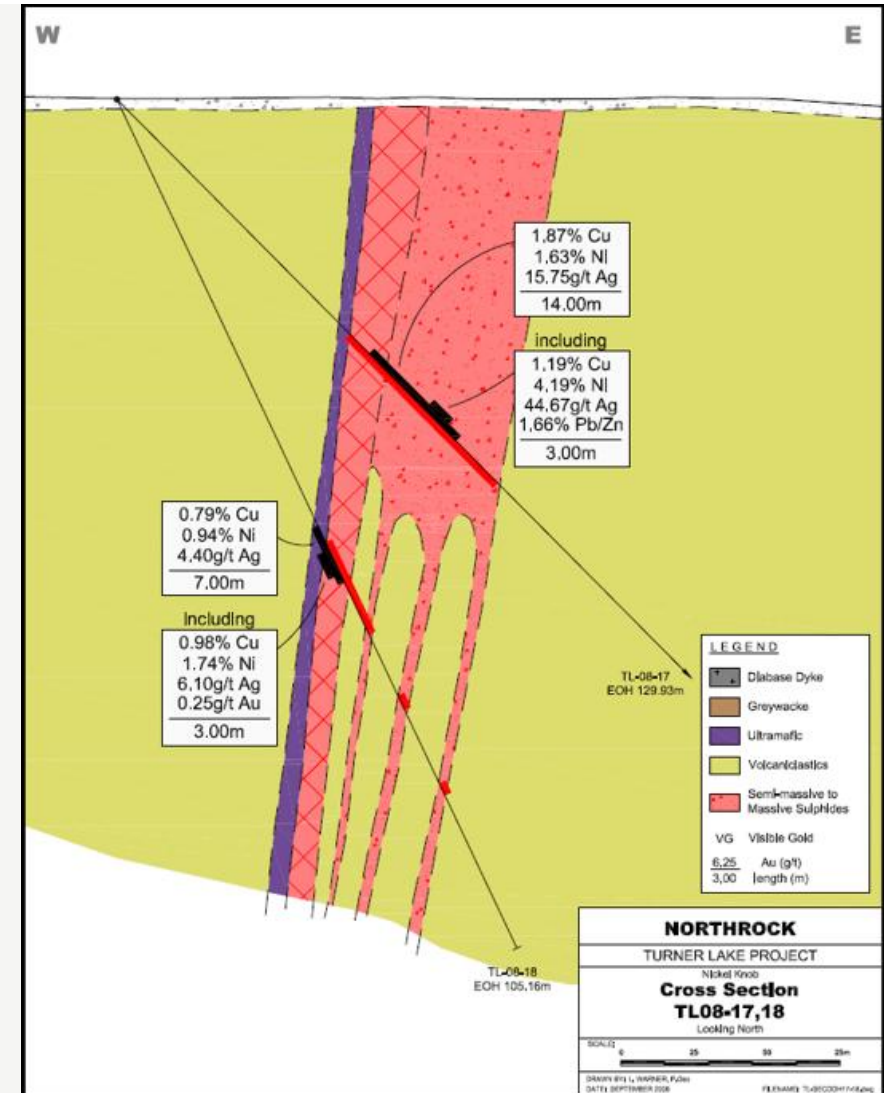
## 2- TED SHOWING

- 8 km SW of Turner Lake Main Gold Zone
- Iron Formation — analogous to Sabina Gold and Silver.
- Gold associated with sulphide-poor to -rich, chert-rich iron formations; sulphide-rich lenses contain pyrite, arsenopyrite, pyrrhotite and visible gold.
- Historic grab samples: up to 138.2, 70.3, 68.9, 42.9 and 33.8 g/t Au.
- 2021 fieldwork confirmed historic results and visible gold in Archean iron formation; 6 of 18 grab samples returned >20 g/t Au (22.8–100 g/t).
- Area hosting higher-grade values not yet drill tested.



# 3- NICKEL KNOB

- High-grade Ni–Cu–Ag system with polymetallic upside hosted in semi-massive to massive sulphides
- Comparable to magmatic sulphide systems with scale potential
- Mineralization within ultramafics & volcanoclastics associated with diabase dykes & greywacke
- Trace gold present (visible gold noted locally)
- Key Intercept:
  - TL-08-17: **1.87% Cu, 1.63% Ni, 15.75 g/t Ag** , over **14.0 m**
  - TL-08-18: **0.79% Cu, 0.94% Ni, 4.40 g/t Ag** over **7.0 m**



# Option Agreement



TSX-V: **BMV**  
OTC: **BMVVF**

- Muskox Property divestment to SPC Nickel Corp.

Payment Date	Cash Payment	Shares of SPC
March 21, 2023	\$300,000	2,500,000
March 21, 2024	\$50,000	2,250,000
March 21, 2025	\$250,000	750,000
March 21, 2026	\$350,000	2,000,000
March 21, 2027	\$400,000	-
<b>Total</b>	<b>\$1,350,000</b>	<b>7,500,000</b>

- Peerless Acquisition

Payment Date	Cash Payments	Expenditures	Common Shares Issuance
January 31, 2023	\$ -	\$ -	500,000
April 30, 2023	\$25,000	-	-
July 31, 2023	\$25,000	-	500,000
January 31, 2024	\$25,000	\$200,000	500,000
July 31, 2024	\$ -	-	500,000
April 30, 2025	\$50,000	\$500,000	-
June 30, 2027	\$50,000	-	2,000,000
January 31, 2028	\$50,000	-	-
September 30, 2028	\$75,000	\$1,000,000	3,500,000
January 31, 2029	\$100,000	-	-
September 30, 2029	\$100,000	\$1,000,000	-
<b>Total</b>	<b>\$500,000</b>	<b>\$2,700,000</b>	<b>\$7,500,000</b>

# MANAGEMENT



TSX-V: **BMV**  
OTC: **BMVVF**

## Etienne Gouin-Proulx

INTERIM CEO & DIRECTOR

Etienne Gouin-Proulx is a Chartered Financial Analyst (CFA) and Professional Engineer (P.Eng.) with experience in project evaluation, mergers and acquisitions, and corporate development. He holds a Bachelor of Engineering from McGill University, specializing in Mining and Mineral Engineering. Mr. Gouin-Proulx currently serves on the board of directors of Xcite Uranium and Provenance Gold Corp.

## Lorne Warner, P.Geo.

PRESIDENT & DIRECTOR

Lorne Warner is a registered professional geologist in B.C, NWT and Nunavut with over 30 years' experience in underground and open pit mining mineral exploration. His experience includes working for senior mining companies, Noranda Exploration and Placer Dome Inc. as well as Vice President of several junior mining companies. Lorne's team were the first to conduct exploration at Detour Lake after closure by Placer Dome and discovered the western extension of the Detour Lake Gold Deposit, now in production in Ontario. As well, the Falea North Zone – Uranium, Silver, Copper Deposit and the Fatou Main Gold Deposit both in Mali, West Africa. His career started in British Columbia but has now worked throughout the Americas, Africa, Asia and Australia. Lorne is currently a director, President and CEO of Tarachi Gold Corp. in Mexico and a director of Indigo Exploration Inc. working in West Africa. Lorne McLeod Warner graduated from the University of Alberta in 1986 with a BSc. in Geology.

## David McAdam

CFO

David McAdam is a Senior Executive with over 30 years of finance and operations experience in large and small capitalization companies, David has extensive expertise in fund raising (over \$350 million in equity and debt), financial operations and planning, mergers and acquisitions (buy and sell side), due diligence, investor relations (TSX.V and JSE), systems strategy and implementation, risk management and regulatory compliance. David has been the Chief Financial Officer of several public and private companies across various industry sectors including a number of public and private mining companies. These roles required reporting to public company Audit, Safety and Risk Committees along with full Board presentations for a Fortune 150 Company. David has a Bachelor of Commerce degree from the University of British Columbia.

# BOARD AND ADVISOR



TSX-V: **BMV**  
OTC: **BMVVF**

## Greg Bronson, P.Geo.

DIRECTOR

Mr. Greg Bronson is a Professional Geologist with 30 years exploration and development experience in mining exploration and the oil and gas industry and brings excellent skills to manage the complex technical issues of mineral exploration. He has worked in Canada for a major mining company Noranda Exploration (now Xstrata) and multiple junior resource companies including Rockgate Capital Corp (now Denison Mines), Sentinel Resources Corp, among others. Mr. Bronson is a director of EMP Metals, a junior DLE mining company with interests and active projects in Saskatchewan.

## Jean-François Meilleur

DIRECTOR

Jean François Meilleur graduated from HEC Montréal in 2003 with a bachelor's degree in finance. He is a Managing Director at P.E. Partners Limited, a small-cap capital markets boutique, where he has worked with dozens of entrepreneurs and junior exploration companies, including taking on executive and directorship roles. Mr. Meilleur currently serves as Chair of the Board of High Tide Resources Corp., CEO and Director of Xcite Uranium, and VP of Capital Markets of Soma Gold.

## Dr. Guowei Zhang

ADVISOR

Dr. Zhang has over 30 years' experience as a consulting geologist, well recognized for his specialized work in Structural Geology. He received his Ph.D. from McGill University in 1994 and since then has worked extensively throughout Canada, the United States, Asia and Africa. Dr. Zhang is a Fellow of the Geological Association of Canada.



TMX | TSX Venture Exchange : BMV

OTC: BMVVF

## Etienne Guin-Proulx

*INTERIM CEO & DIRECTOR*

EMAIL [egp@bathurstmetalscorp.com](mailto:egp@bathurstmetalscorp.com)

PHONE +1 438 492-2427

OFFICE 1200 Waterfront Centre, 200 Burrard Street

P.O. Box 48600, Vancouver, BC, Canada, V7X 1T2

WEB [bathurstmetalscorp.com](http://bathurstmetalscorp.com)

